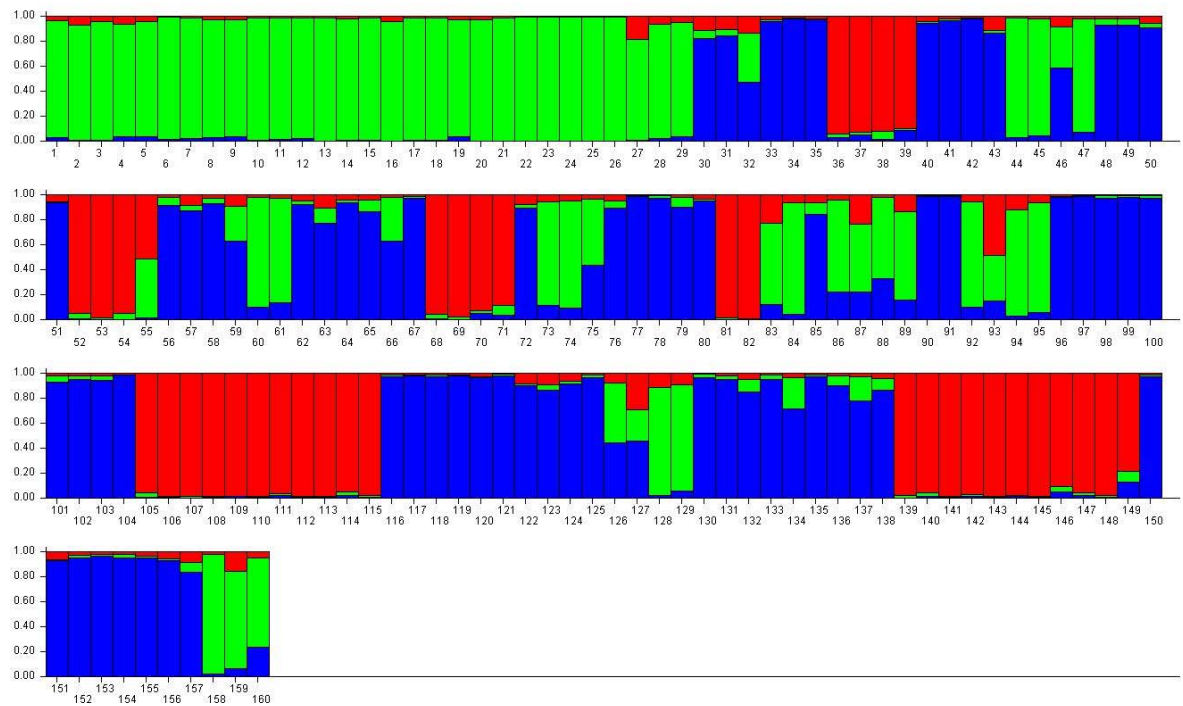
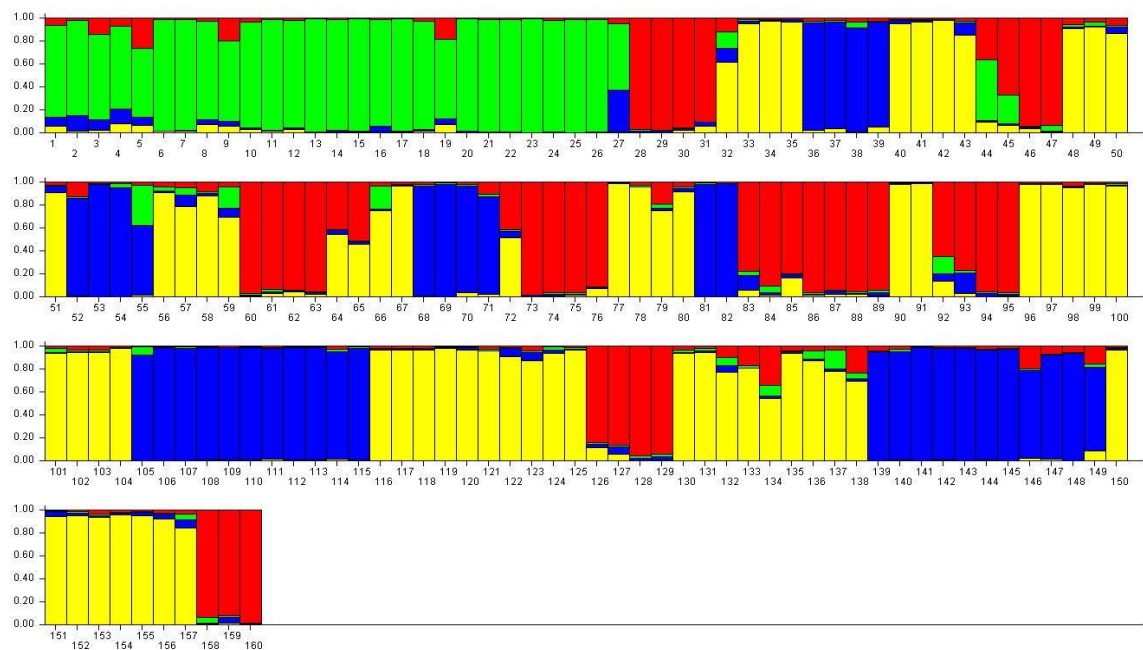


**Figure S1:** Population structure analysis of the ten populations of *S. asoca* based on the Bayesian approach (K=3; K=4; K=5; K=6; K=7) (Population labelling, 1-27:SAD; 28-43:SANAG; 44-59:SABG; 60-72:SAT; 73-82:SAKT; 83-85:SADU; 86-91:SAM; 92-125:SAB; 126-157:SAGJ; 158-160:SAR).

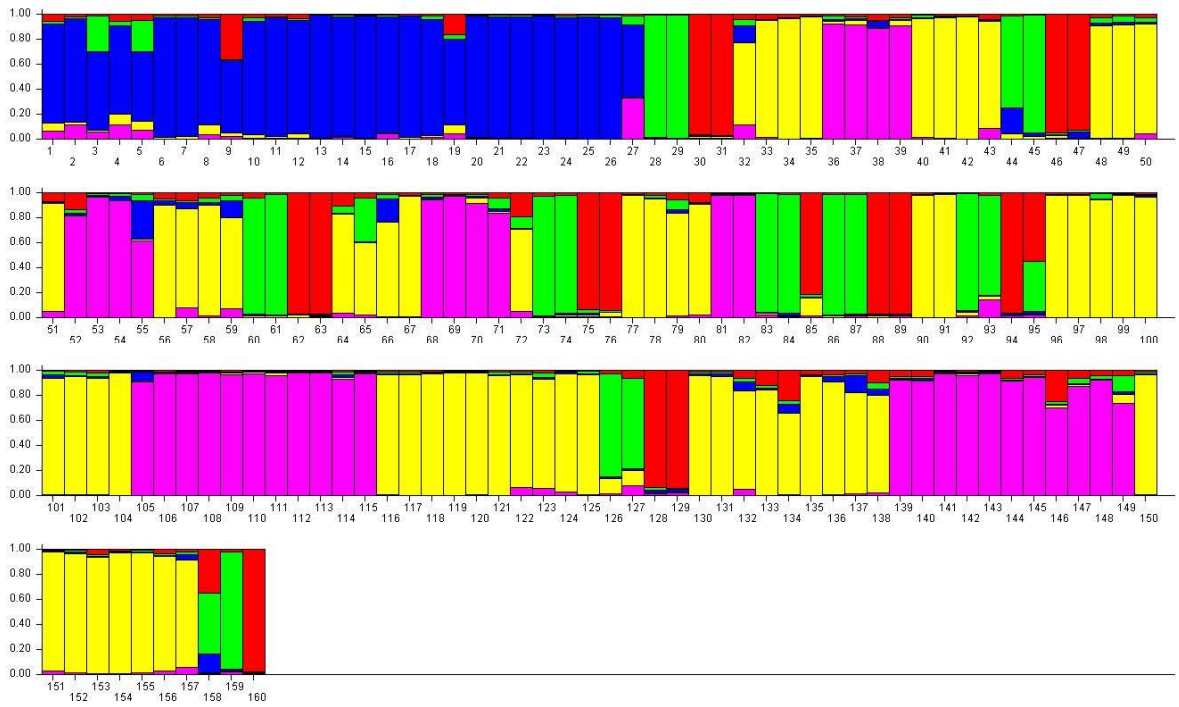
**K=3**



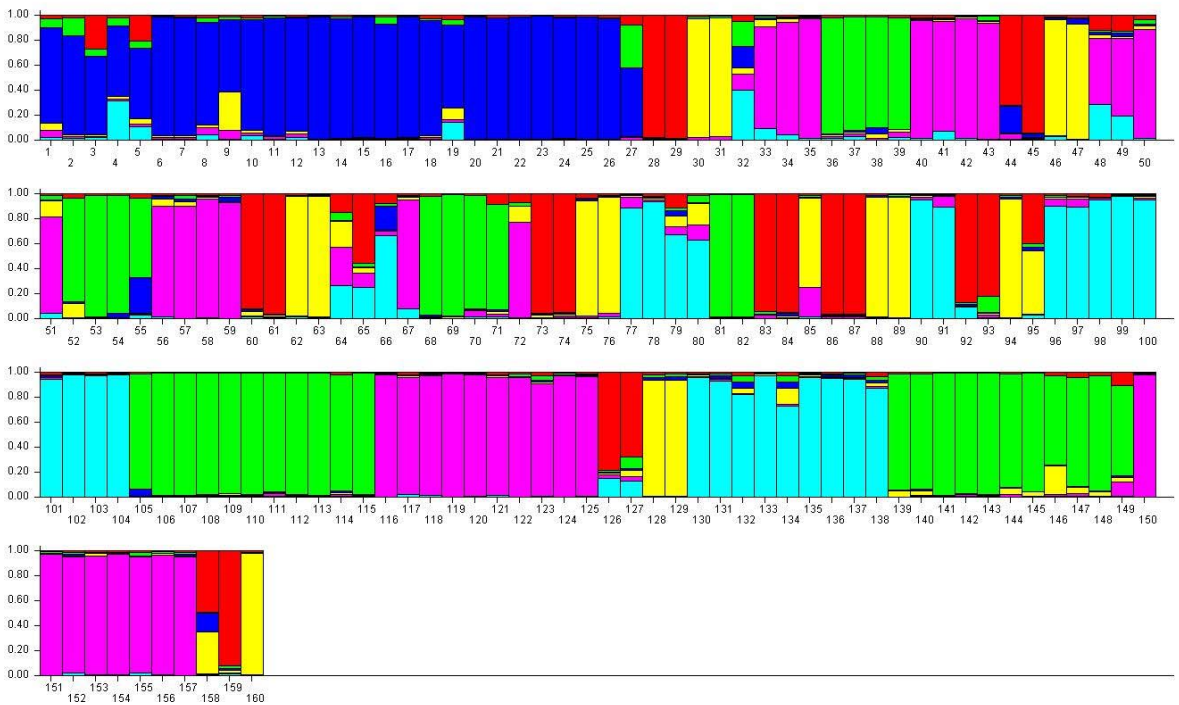
**K=4**



# K=5



# K=6



**K=7**

