

Cooperative Research Centre for Spatial Information

Mary Sue Severn
 Director CRCSI New Zealand
 New Zealand Geospatial Office



Agenda

- NZGO
- CRC
- CRCSI
- CRCSI in New Zealand
- The game plan
- The opportunity



NZGO - Championing the NZ Geospatial Strategy

- Team of 6 & growing
- Led by Kevin Sweeney, Geospatial Custodian
- Roles:
 - Communications & Engagement
 - Policy
 - Standards
 - Research




New Zealand Geospatial Office

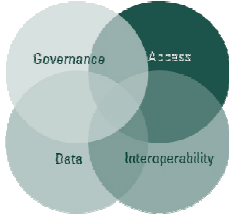
- Outward-facing Office, supporting all of government
 - LINZ is one of our "clients"
- Undertake a range of **work streams** to support the Strategy



New Zealand Geospatial Strategy



Four Strategic Goals




I. Governance – establish the governance structure required to optimise the benefits from government's geospatial resources.

II. Data – ensure the capture, preservation and maintenance of fundamental (priority) geospatial datasets, and set guidelines for non-fundamental geospatial data.

III. Access – ensure that government geospatial information and services can be readily discovered, appraised and accessed.

IV. Interoperability – ensure that geospatial datasets, services and systems owned by different government agencies can be combined and reused for multiple purposes.

NZGO Work Programme



Key Initiative/Govt Priority

Championing the New Zealand Geospatial Strategy


Work Streams

- Strengthen Governance
 - Facilitate NZ-SDI
- Fundamental Datasets
 - Standards
- Capability
 - Research
- Engagement
 - Operations


Key Projects

- GEG, GSC
- Roadmap, Gateway Catalogue
- Addresses, KiwiImage, LIDAR
- ANZLIC Metadata to e-GIF
- NGIS, Education Web Portal
- CRCSI
- NZGS Web Site, Blog
- Performance Evaluation Framework

How we help



- Inform
 - Case studies e.g. making data available, SDI
 - Experienced "set of eyes"
 - Link you to other organisations
- Support
 - Best practices
 - Policies, Standards, Frameworks
 - Educational opportunities
- Incentivise
 - Recognition
 - CRCSI – access to R&D funding



Cooperative Research Centres




- Australian federal government funded organisations
 - Build critical mass in research ventures
 - Deliver social & economic benefits
- ~ 50 CRC's:
 - ICT:
 - CRC for Spatial Information (CRCSI) – since 2003
 - Plus ... Manufacturing, Forestry, Health, Greenhouse Gas, Biosecurity, Agriculture, Energy, Transport, ...
 - New Zealand organisations do participate ... not to same level as CRCSI

LINZ joined CRCSI in 2009



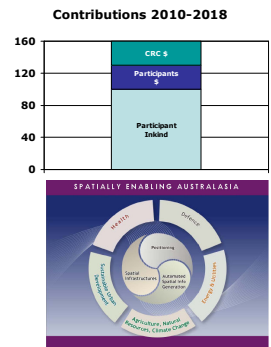
- The opportunity:
 - Closer economic relations, Trans Tasman (ANZLIC)
 - Opportunities to accelerate, leverage NZ activities e.g. SDI
 - Enable NZ to participate, benefit
 - Grow NZ economy
- The decision:
 - Shared core values
 - LINZ leadership role
 - CRCSI's "anchor" participant in NZ
 - Launched NZ "node" April 2010 within NZGO
 - Support research work programme



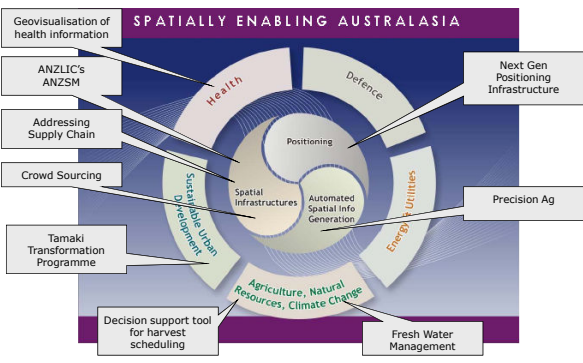
CRCSI – the facts



- Funding: > A\$160m
- Term: 2010 to 2018
- 8 core R&D programmes
- > 70 Participants in 3 Colleges:
 - Government
 - Research & Education
 - Corporate (private sector)
- 2 levels: Essential or Support
- Wide range of end-user driven projects
 - Representation from each college



R&D Programmes



Current Participants by College



Government	Corporate	Research
ANZLIC Including Land Information New Zealand	43pl (representing 70 companies)	Curtin University of Technology
Landgate (WA) Dept Agriculture and Food Dept of Health Dept of Planning	Egon Energy Energen	Queensland University of Technology
Land and Property Management Authority (NSW) Dept of Environment, Climate Change & Water and other agencies	Spatial Information Systems Ltd	University of Melbourne
Department of Sustainability and Environment (Vic) Dept of Primary Industries Dept of Human Services and other agencies		University of New England
Commonwealth Geoscience Australia Dept of Defence Australian Bureau of Statistics Australian Institute of Health & Welfare and other agencies		CEODE, Chinese Academy of Sciences McGill University (Canada) RMIT Swinburne University Tishchenko Institute of Child Health Research Wuhan University (China)
Dept of Environment & Resources Management (Qld) and other agencies		

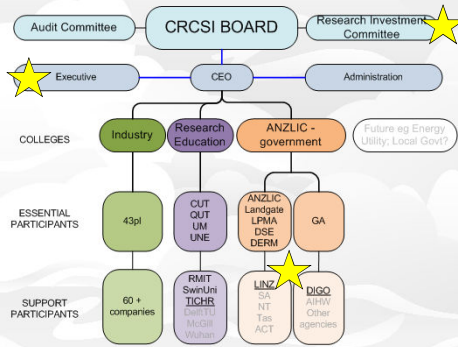
Including LINZ, our NZ Participants are:



Looking to join is:



Governance & Management

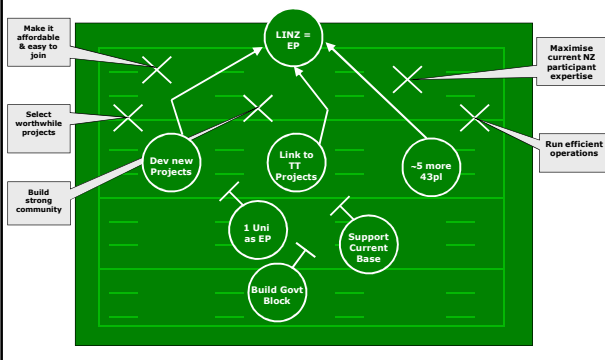


My role



- Director (of Operations) CRCSI New Zealand
- Represent NZ on CRCSI Executive team
- Promote
- Coordinate
- Support
- Let me share with you my game plan ...

The Game Plan for NZ



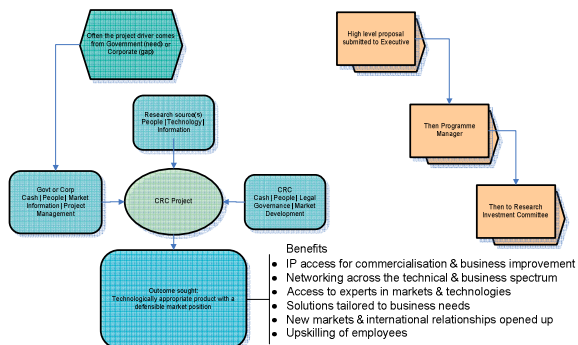
LINZ as Essential Participant



- Strengthen Trans Tasman relationships
- Greater influence
 - Membership on Boards, Committees
 - More input into strategy, direction, priorities
- Deliver social & economic outcomes from projects involving NZ participants
- Build a healthier spatial industry & educational sectors



How a project might work



The opportunity for NZ Inc



- Drive key SI research & development
- Leverage capability & capacity from the "whole"
- Join how/when it suits you



Next steps



- Meet Peter Woodgate, CE of CRCSI
 - In Wellington October 13, 14, 15
- Talk to current participants
 - E.g. Landgate WA, Dept of Sustainability & Environment VIC, Curtin University WA, e-Spatial, ...
- Visit www.crcsi.co.nz
- Contact me
 - Present to a wider group in your organisation or sector
 - Explore R&D ideas; submit high level proposals to Executive
 - Facilitate workshops

Thank You!

Mary Sue Severn

msevern@linz.govt.nz

04 460 0188

New Zealand Geospatial Office

CRCSI Website:

www.crcsi.co.nz