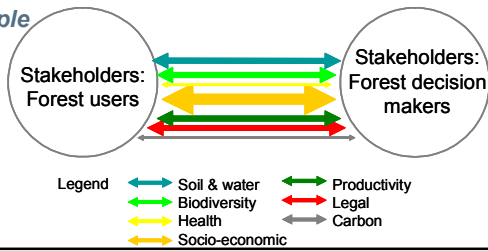




## Visualising forest sustainability - SOCIAL

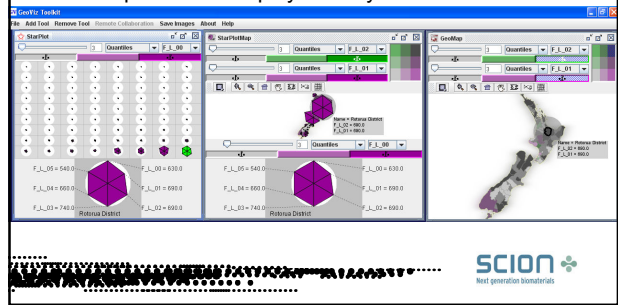
- Stakeholders in forest sustainability: authorities, public, industry, customers

For example



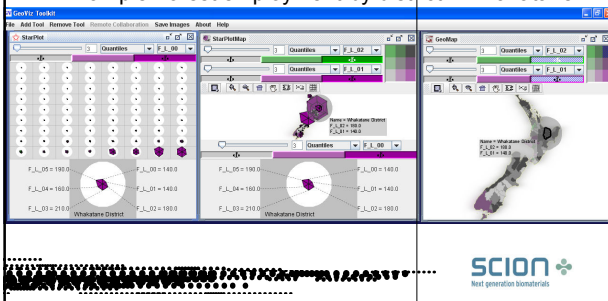
## Visualising forest sustainability - ECONOMIC

- Information visualisation
- Example: forest employment by district - Rotorua



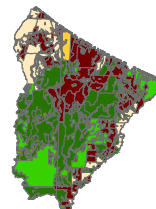
## Visualising forest sustainability - ECONOMIC

- Information visualisation
- Example: forest employment by district - Whakatane



## Visualising forest sustainability - ENVIRONMENT

- Example: downstream effects of forestry
- Case study: a Central North Island catchment
- Forestry, also indigenous forest, dairy, crops, sheep and beef
- Model: accumulates leaching from land use into streams, so as to visualise nitrogen loading in streams

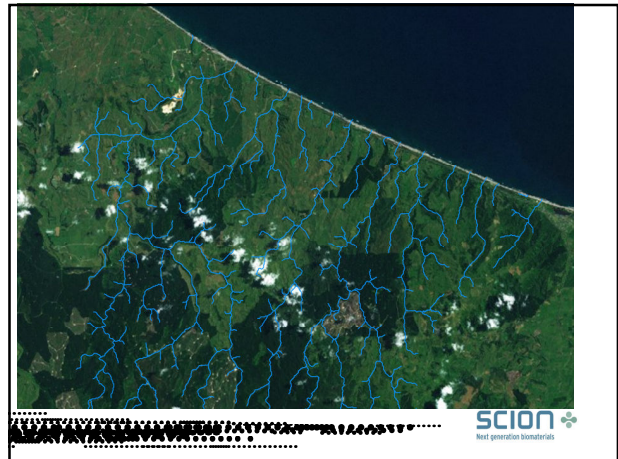
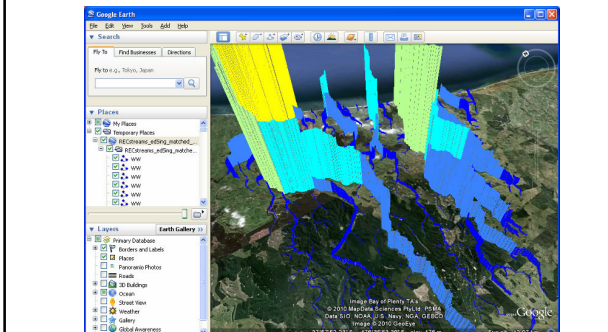


- Land Use
- Unknown
  - Arable/Mixed Crops
  - Diary
  - Planted Forest
  - Natural/Indigenous Forest
  - Piggeries and Poultry
  - Sheep/Beef/Deer
  - Fruit
  - Vegetables

SCION  
Next generation biomaterials

## Visualising forest sustainability - ENVIRONMENT

- Visualisation options



## GIS visualisations - CONCLUSIONS

- Developing further visualisations for sustainability, especially for soil & water, biodiversity, and socio-economic criteria
- Representing sustainability on landscape – representation workshop later this year
- Addressing differences in sustainability concepts (values)
- 

*THANK YOU*

