

Strategic Tactical Fire Management Planning (STFMP) – Multi-Agency Approach

Presentation by Heather Wakelin
Project led by the Department of Conservation


Outline

- Justification and Objective
- Risk Assessment
- STFMP Process
- Draft Plan Areas for Canterbury
- Use of Prometheus
- Conclusion

Justification and Objective

■ NRFA Standard – Assessing Fire Hazards

Key Requirements

- WTA and map ✓
- If WTA ≥ 601  risk assessment following AS/NZS ISO 31000
- Risk must be identified, analysed, evaluated, and treated
- Register of Building Risk Assessment must be established (NZFS)

Risk Assessment (AS/NZS ISO 31000)

- Risk Management – Principles and Guidelines
- Framework for analysis
- Protecting Values
- Establishing Communication/Consultation
- Defining Risk 

Likelihood x Consequence

STFMP - Definitions

Strategic

–allows long-term vision and goals to be established and realised

Tactical

–turns strategy into reality and is usually tightly integrated with annual budget processes

STFMP

Project initiated in 2006

Originally DOC only

A draft guideline and template has been developed which includes multiple agencies

Improvements to Fire Management

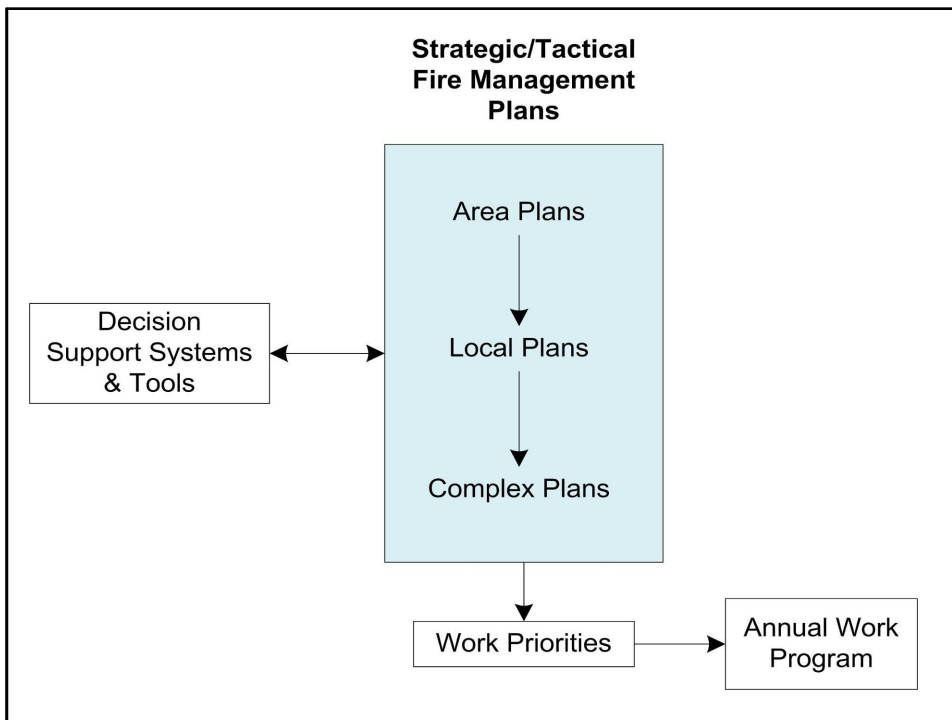
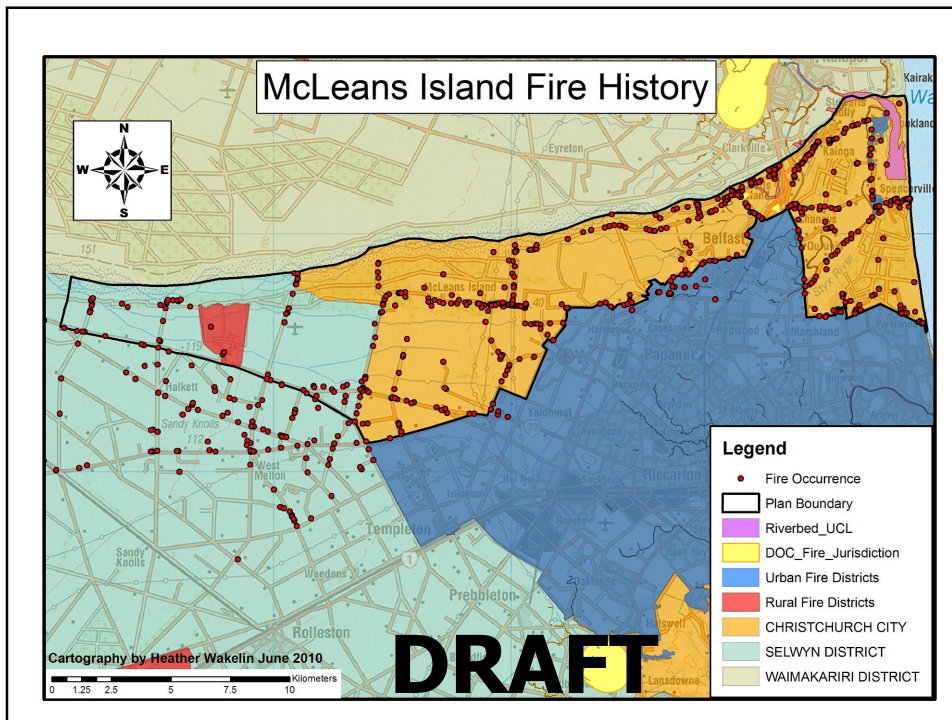
↑ **Fire reduction** ↑

Values and risks → improved collaboration

- Focusing fire management activities in most appropriate places
- Standardised format → consistency for prioritising
- Access to the best available information in a GIS-format (ARC READER)

What does the STFMP process involve?

- Creating plans for land areas managed by RFAs → determining mitigation actions based on **PRIORITY**
- Information gathering
- WTA Summary and Local Knowledge
- Identifying management constraints
- Partitioning land into similar priority groups



STFMP – Local Plans and Complex Plans

- WTA Reclassification Tool

+

- Local Knowledge

Local Plans

1. LOW PRIORITY
2. MEDIUM PRIORITY
3. HIGH PRIORITY
4. VERY HIGH PRIORITY

Complex Plans

1. Life
2. Property Values
3. Biodiversity
4. Historic Values
5. Iwi Values
6. Rec Values
7. Ecosystem Services
8. Economic/Utility
9. Other
10. RFA

STFMP – Mitigation Actions

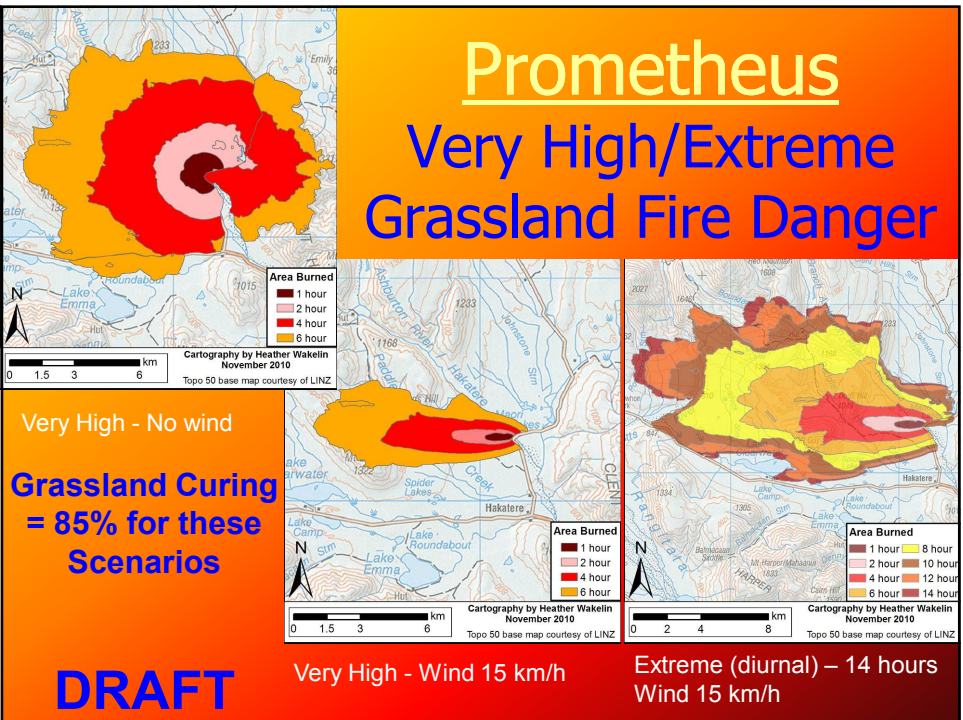
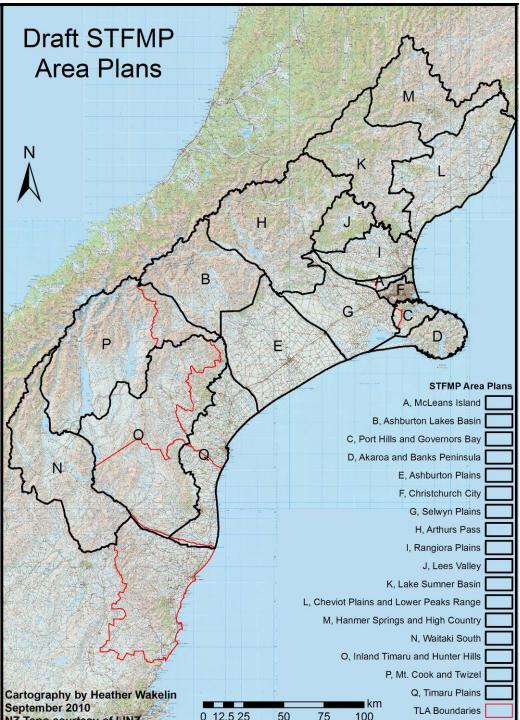
- 4R's of Emergency Management

Specifications

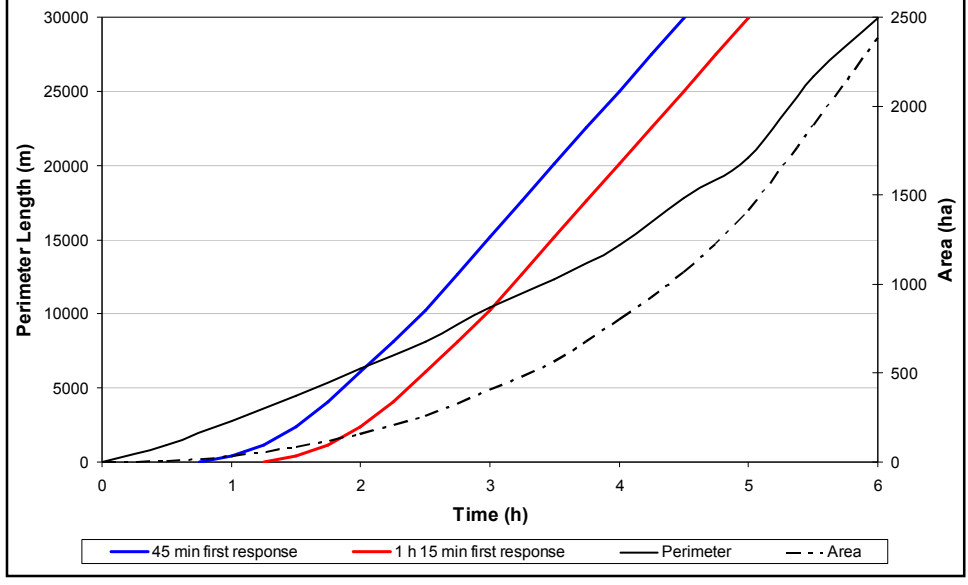
- General (Area Plan)
- Priority (Local Plan)
- Specification (Complex Plan)

Criteria for Area Plan Boundaries

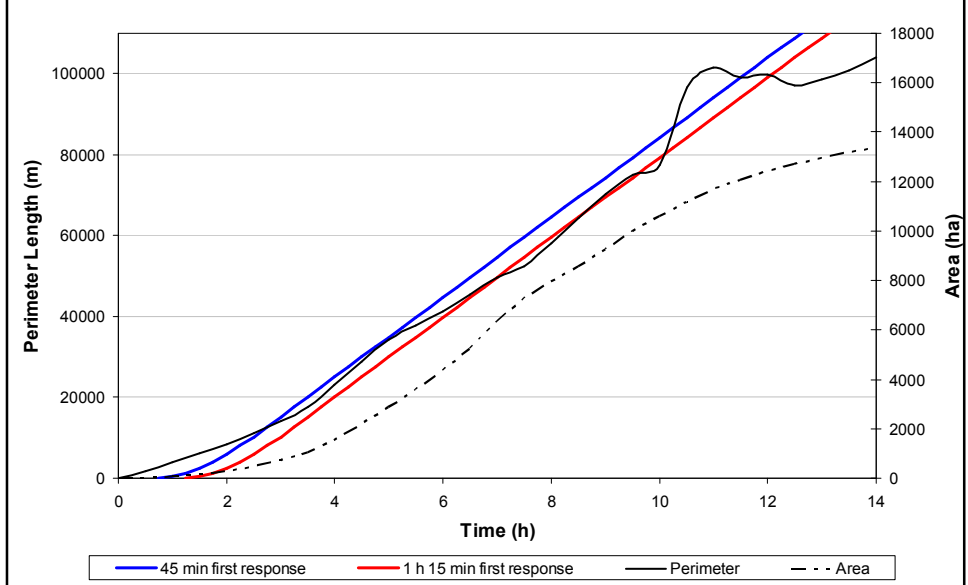
- Natural topographic features
- TLA boundaries
- Rural Fire Authority fire restriction lines
- Include small communities
- Size is determined based on complexity of values and risks in the area



Predetermined Response – Very High Fire Danger (Plan MC_B) **DRAFT**



Predetermined Response – Extreme (diurnal) Fire Danger (Plan MC_B) **DRAFT**



Predetermined Response objectives and actions DRAFT

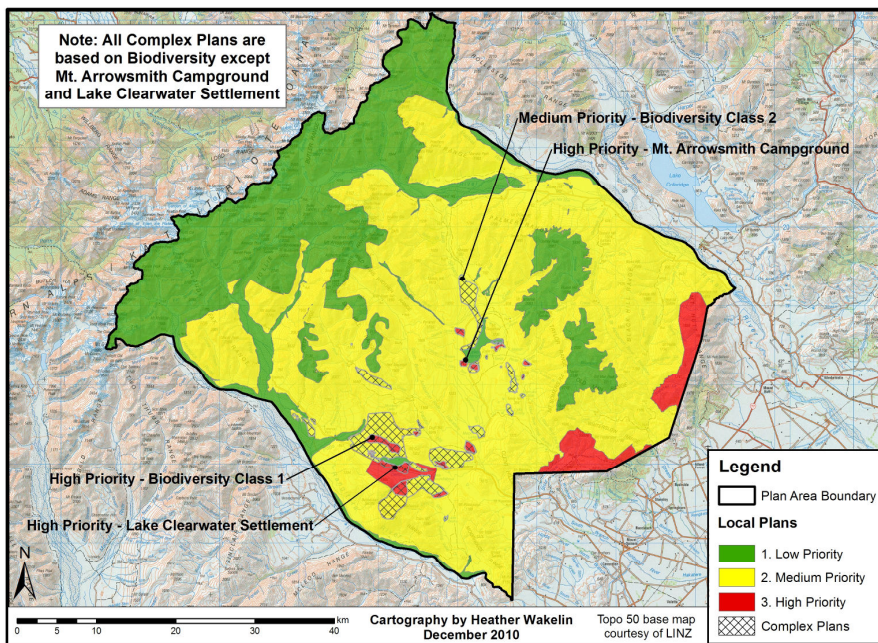
Ashburton Basin (Responding via Ashburton Gorge Road)

Medium and High Priority Local Plans

Grassland Fire Danger	Objective	Plan of Action		
		Resources	Location	Approximate Arrival Time*
Low or Moderate	To contain the fire to < 5 ha within 2.5 hours	1 ground crew (3 pax)	ADC Mt. Somers	45 min
		1 ground crew (4 pax)	NZFS Methven	1 h 15 min
High	To contain the fire to < 50 ha within 2.5 hours.	1 helicopter	Mt. Hutt	
		1 ground crew (4 pax)	ADC Mt. Somers	45 min
		1 ground crew (4 pax)	Mt. Hutt	45 min
		1 ground crew (4 pax)	ADC Mayfield	1 h
		1 ground crew (4 pax)	ADC Alford Forest	1 h
		1 helicopter	Mt. Hutt	1 h
		1 ground crew (4 pax)	NZFS Methven	1 h 15 min
		1 filling crew	NZFS Methven	1 h 15 min
		1 ground crew (6 pax)	ADC Ash Rural	1 h 30 min
		Other Resources:	RFO (Initial Attack IC) - with backup smoke chaser if from DOC, Air Support Supervisor, Operations Manager, Logistics Manager and 2 support personnel, Command Unit, 100 litres foam	
Standby Requirements	1 helicopter	Rakaia Gorge		
	1 fixed wing	Methven	N/A	
Standby Requirements	Bulk foam retardant supplies			
	1 ground crew (4 pax)	ADC Mt. Somers	45 min	
Very High or Extreme	To contain the fire within the first 12 hour operational period.	1 helicopter	Mt. Hutt	45 min
		1 helicopter	Upper Rakaia	45 min
		1 ground crew (4 pax)	ADC Mayfield	1 h
		1 ground crew (4 pax)	ADC Alford Forest	1 h
		1 helicopter	Mt. Hutt	1 h
		1 fixed wing	Methven	1 h
		2 filling crews	NZFS Methven	1 h 15 min
		1 ground crew (4 pax)	ADC Rakaia Gorge	1 h 15 min
		1 ground crew (4 pax)	ADC Laureston	1 h 15 min
		2 helicopters	Christchurch	1 h 15 min
		1 helicopter	Hokitika	1 h 15 min
		1 filling crew	NZFS Ashburton	1 h 30 min
		1 ground crew (6 pax)	ADC Ash Rural	1 h 30 min
		1 ground crew (4 pax)	SCRFD Peel Forest	1 h 30 min
		1 ground crew (4 pax)	ADC Hinds	1 h 30 min
		1 ground crew (4 pax)	ADC Willowby	1 h 30 min
		1 fixed wing	Twizel	1 h 30 min
		1 filling crew	SDC Collieridge	1 h 45 min
		1 ground crew (4 pax)	ADC Pendarves	1 h 45 min
		2 ground crews (8 pax)	ADC Rakaia	1 h 45 min
1 fixed wing	Waikari	1 h 45 min		
1 ground crew (4 pax)	DOC Geraldine	2 h		
1 ground crew (4 pax)	DOC Geraldine	2 h 30 min		
2 ground crews (8 pax)	DOC Rangiora	2 h 30 min		
2 ground crews (8 pax)	DOC Christchurch	2 h 30 min		
Other Resources:	Full Regional Incident Management Team (fully kitted), Northern and Southern Retardant Units, ICP adequate site with power, phone and assembly area, Fire Depot Maintenance Services, 300 litres foam			
Standby Consideration	Full National Incident Management Team (fully kitted)			

Local and Complex Plans DRAFT

Note: All Complex Plans are based on Biodiversity except Mt. Arrowsmith Campground and Lake Clearwater Settlement



Conclusion

- The STFMP process **WILL** meet the NRFA standard and **WILL** follow the AS/NZS ISO 31000 of Risk Assessment
- Multi-agency approach ensures collaboration between RFAs
- Allows for variable management actions and budgets
- Establishes and maintains good communication between RFAs and stakeholders within plan areas