



**Te Uru Rākau**  
Forestry New Zealand

**Ministry for Primary Industries**  
Manatū Ahu Matua

---



# One Billion Trees Programme: Priorities, Opportunities and Challenges

**Antonia Reid**

Manager

One Billion Trees Policy

Ministry for Primary Industries

September 2019

# Overview

- One Billion Trees update
  - Programme progress
  - What are the key challenges and opportunities moving forward?
- Introducing the Forest Strategy
  - Long term vision
  - Key themes
  - Next steps



# One Billion Trees Programme

- The Government has set a goal to plant one billion trees by 2028.
- The One Billion Trees Programme will deliver improved social, environmental, and economic outcomes for Aotearoa New Zealand.



1. Direct landowner grants  
2. Partnership projects



Matariki Tu Rākau



Crown Forestry joint ventures



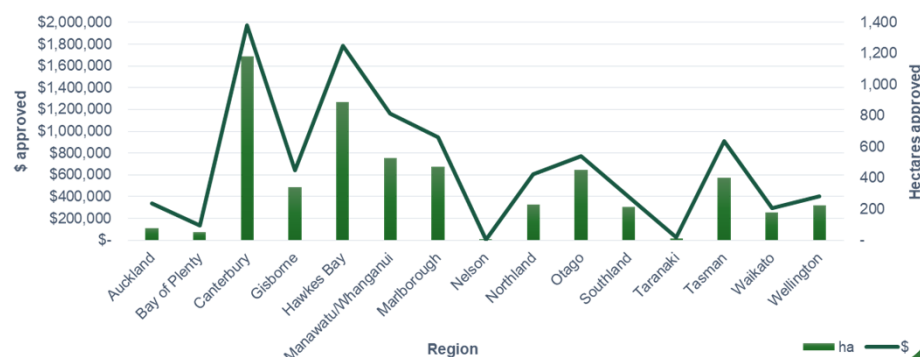
# One Billion Trees Programme - Progress



## Landowner Grants

- Allocated **107** Direct Landowner Grants totalling **\$10.4m**.
- 76** grants include indigenous planting.
- 2.3 million native** and **3.9 million exotic** trees.
- Approximately **75%** of grant applications contain indigenous planting and **60%** are for natives only.

1BT Fund Direct Landowner Grants by region



## Partnership Grants

Partnerships funded approximately **3.4 million native** trees

- Projects with Māori landowners, Iwi and Hapū.
- Reforestation of 100K ha of erodible land.
- 3 restoration projects with DoC.
- Upscaling 'Trees that Count'.
- Commercial nurseries projects including a sector action plan.
- Science projects including establishment of a 'Restoration Ambassador' & species to site matching research.
- Conservation projects, developing low-cost planting and regeneration scenarios and a research platform for large-scale restoration projects.

Mim

Manatū Ahu Matua



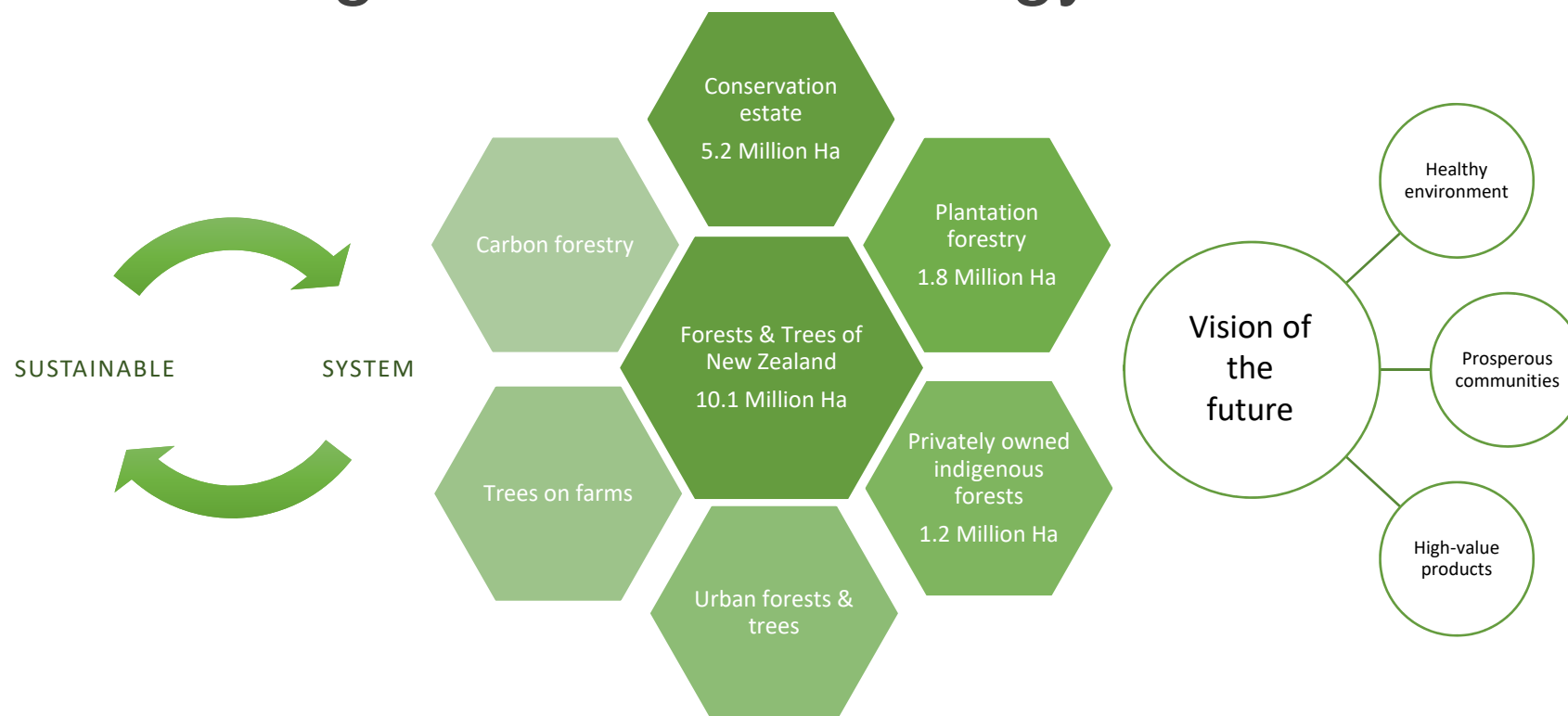
Forestry New Zealand

# One Billion Trees Programme

- Opportunities
  - Economic development & transition to a low emissions economy
  - Māori values & optimal land use
  - Carbon sequestration, erosion mitigation and water quality.
- Challenges
  - Information
  - Workforce
  - Seedling supply.



# Introducing The Forest Strategy



# The Forest Strategy - Long term vision

To transition to a low emissions future

- Enhance environmental benefits of trees & forests.
- Mitigate climate change.
- Adapt to the impacts of climate change.
- Provide a sustainable alternative to fossil fuels.

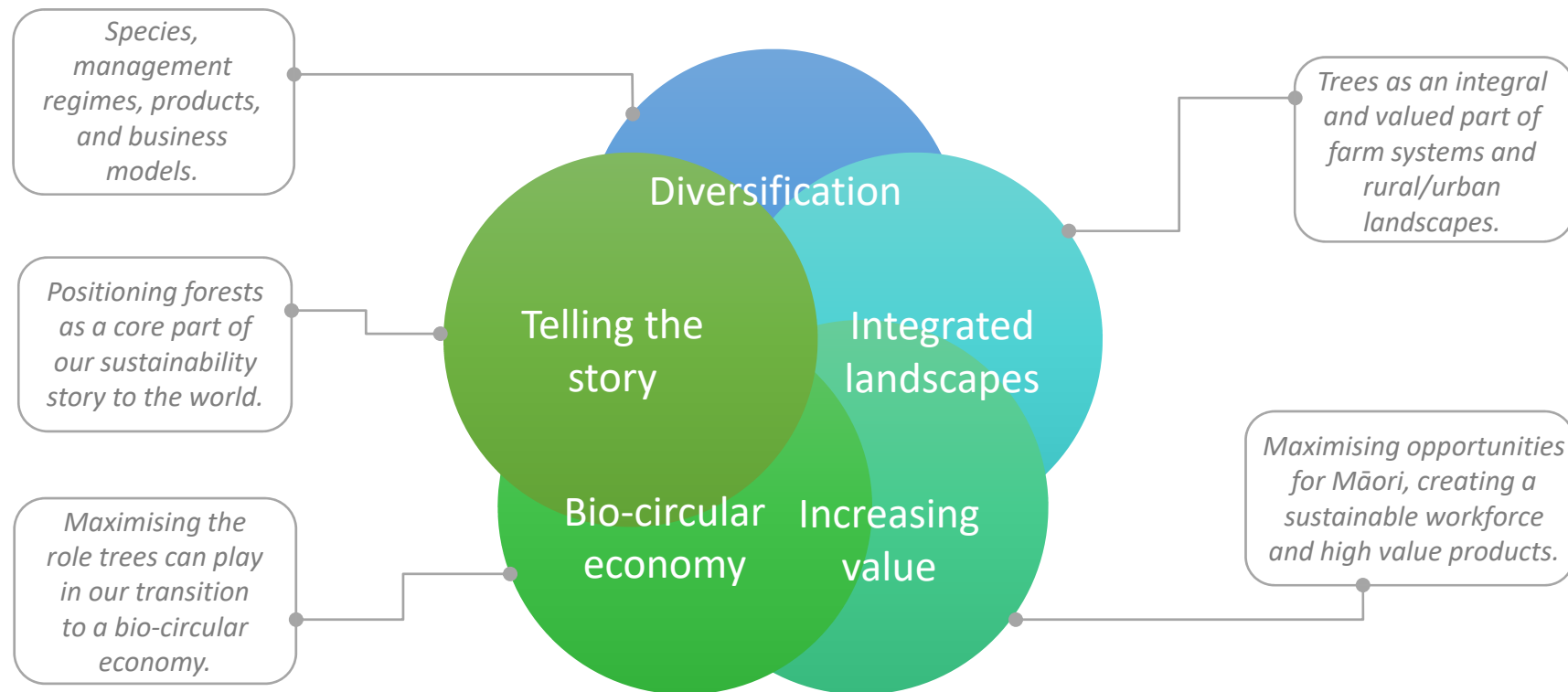
Address challenges with the status quo

- Monoculture farming.
- Reduced resilience to pests & disease.
- Market reliance.
- Labour.
- Impacts from commercial forestry (e.g. residues).
- Barriers for Māori.
- Fragmented industry leadership.

Increased social, environmental, cultural & economic value for Aotearoa New Zealand.



# The Forest Strategy - Key themes





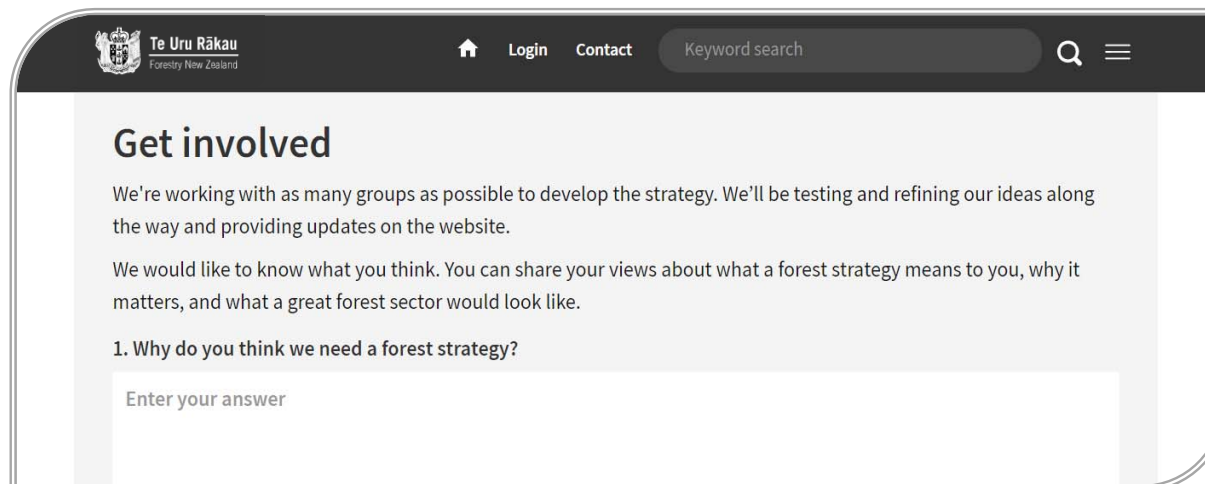
# The Forest Strategy

- Next steps:



Collaboration & unified sector leadership.

Have your say.



# Questions and discussion



**Te Uru Rākau**  
Forestry New Zealand



[www.TeUruRākau.govt.nz](http://www.TeUruRākau.govt.nz)

[1BT@mpi.govt.nz](mailto:1BT@mpi.govt.nz)

[ForestStrategy@mpi.govt.nz](mailto:ForestStrategy@mpi.govt.nz)

For adaptation questions:

[Elloise.Kidd@mpi.govt.nz](mailto:Elloise.Kidd@mpi.govt.nz)

Ministry for Primary Industries  
Manatū Ahu Matua



**Te Uru Rākau**  
Forestry New Zealand