

CORRIGENDUM

*New Zealand Journal of Forestry Science* 22(1): 77–86.

**WITHIN- AND BETWEEN-TREE VARIATION IN MICROFIBRIL ANGLE IN *PINUS RADIATA***

L.A.DONALDSON

New Zealand Forest Research Institute,  
Private Bag 3020, Rotorua, New Zealand

In this paper, Fig. 2 and 3 were accidentally transposed. They are presented here in the correct order.

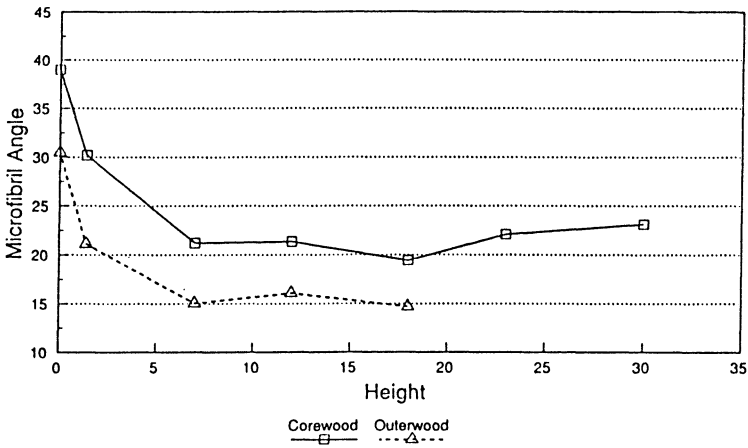


FIG. 2—Variation in volume-weighted microfibril angle for corewood (rings 1–10) and outerwood with height.

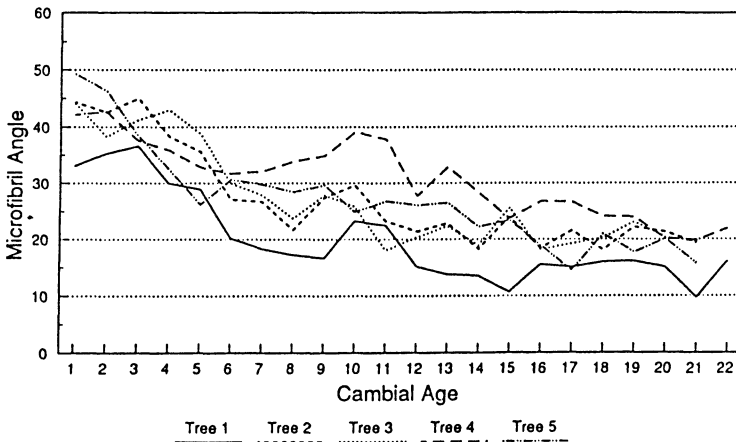


FIG. 3—Variation in microfibril angle among trees at breast height.