

Social licence, sustainable business and resilient communities

Dr Peter Edwards
March 2017



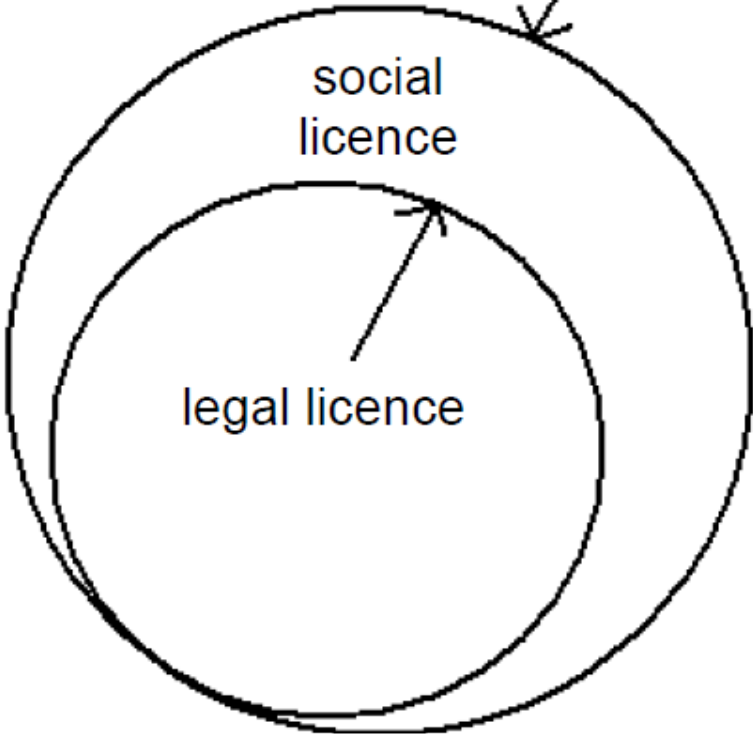
Overview

- Social licence
 - What is it
 - Applicable component – distributional fairness
- Social licence and sustainable business
- Ecosystem services and social licence
- Social licence and resilience
- Bringing together SLO, ES, policy & decision making, and community resilience
- Future opportunities

Social licence

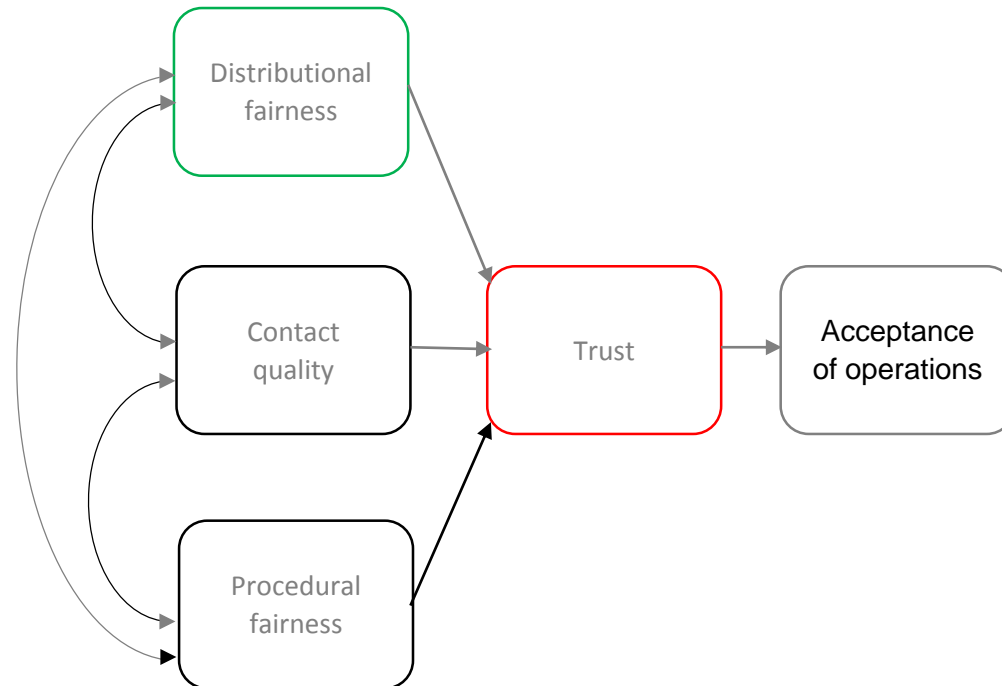
- Licence to operate, social licence, privilege to operate, social responsibility, community licence, how we do business...
- Emerged from the mining and forest industries in the 1990s when they needed to recover their reputation
- SLO is ongoing local community and stakeholder approval or acceptance of the activities of a resource development
- Reflection of the quality of the relationship a company has with its host community
- Informal, earned, not bought or taken, values based, driven by trust
- Lack of transparency can erode it, can be damaged by others outside of your control

society's expectations



Key elements of social licence

- Distributional fairness
- Procedural fairness
- Contact quality
- Trust

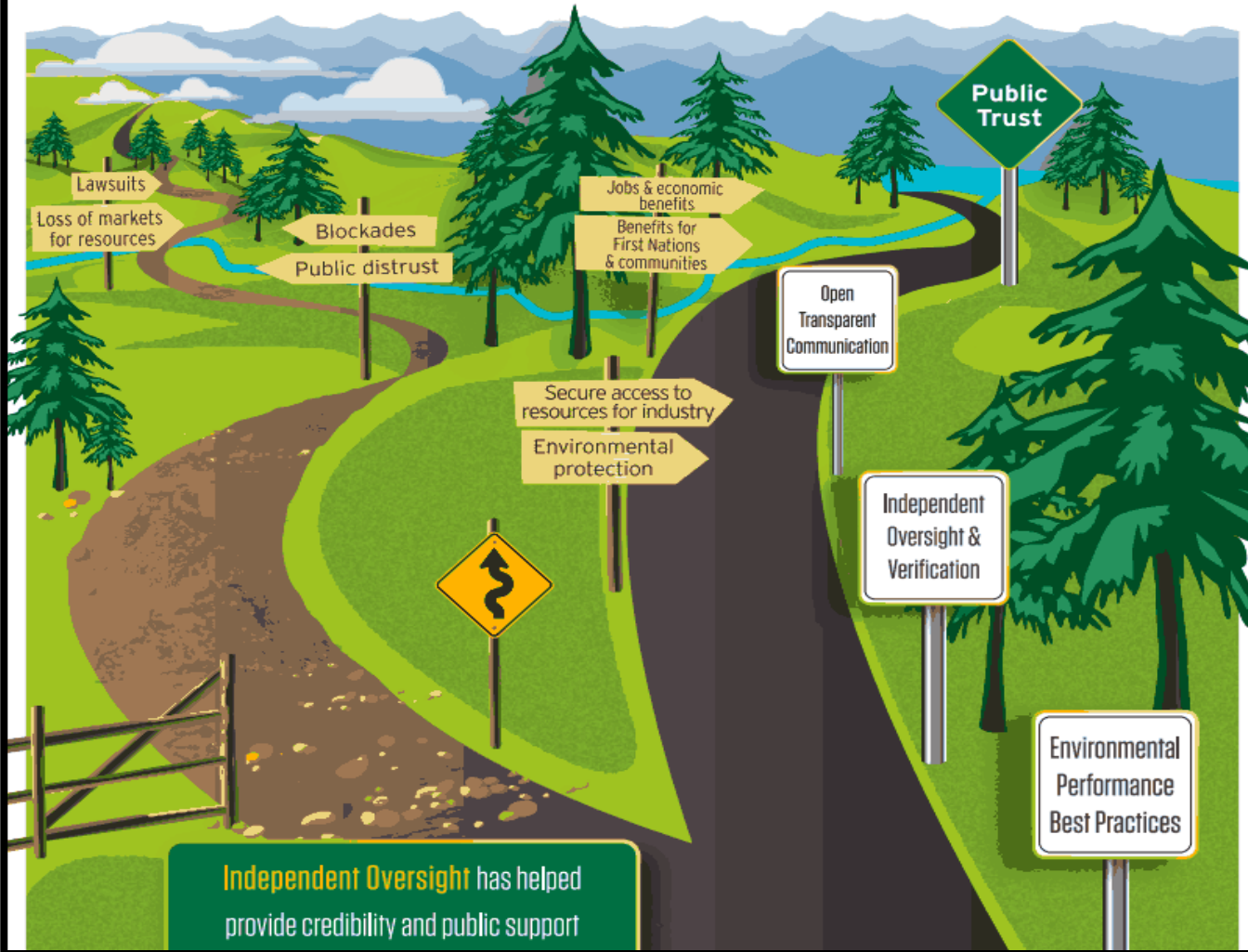


Distributional fairness

- Extent to which benefits of a resource development are perceived to be distributed fairly within a community
- People express greater satisfaction when they believe they receive a fair share of benefits from a development, relative to risk
- Fair distribution of benefits is a significant predictor of trust
- Benefits may include:
 - Direct compensation
 - Royalty payments
 - Participation in joint ventures
 - Local employment and training
 - Investment in local infrastructure

The Road to Success

FOR BC'S RESOURCE SECTORS



Ecosystem services

- Provisioning
- Cultural
- Supporting
- Regulating
- These are benefits that communities can gain from particular industries, especially forestry that can enrich their lives and provide elements of resilience – distributional fairness
- These are in addition to more tangible benefits – employment, infrastructure, etc.

Social licence and resilience

- Trust is a key component of social licence
- Trust as an element of social capital
- Social capital is linked to resilience
- Trust and its relationship with social licence and social capital can be seen to be part of several types of resilience – citizen, service provider resilience
- When there is a loss of trust in an industry, there is a high likelihood of a loss of social licence, which could bring about the demise of an industry, reducing resilience

Knowledge gaps

- Industry understanding the benefits of ecosystem services and communicating this
- Communicating benefits of ecosystem services to the public/stakeholders
- Trust and its contribution to resilience through the lens of social licence

Social licence, sustainability and resilience

- Trust
- Excellent quality and quantity of engagement/contact
- Additional community benefits from ecosystem services
- Is this resilience under neo-liberal policy(ies) and is it a problem?



www.scionresearch.com



Prosperity from trees *Mai i te ngahere oranga*

Scion is the trading name of the New Zealand Forest Research Institute Limited